



## RGB ILLUMINATED VIEWPORT

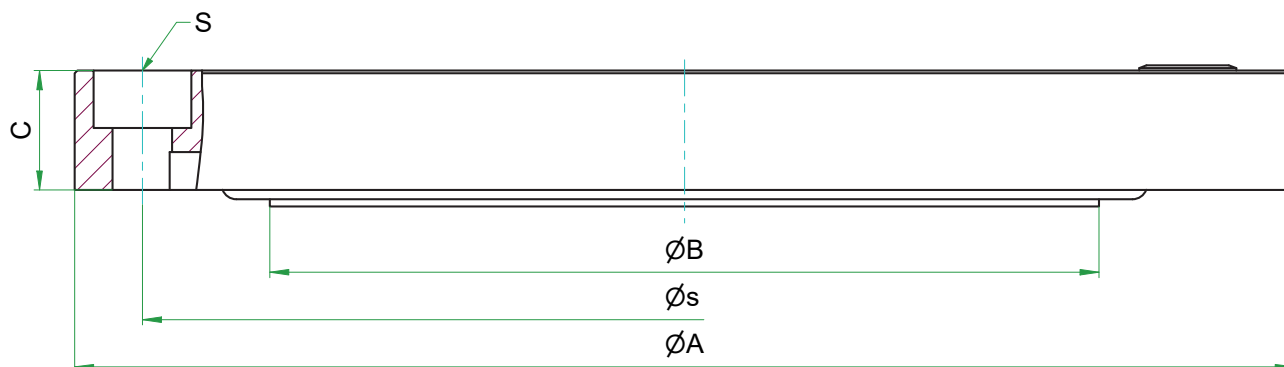
A lighting solution for your  
vacuum chamber



The RGB illuminated viewport brings light into your vacuum chamber.

## Clearly observe sample areas

STREICHER offers a lighting solution designed for customers who require an unobstructed view of their vacuum chamber. Our illuminated viewport makes the everyday life of the vacuum end-user easier.



## Slim design. Many benefits. For better work.

### Advantages of STREICHER's illuminated viewport:

- ISO F compatible
- RGB LED for easy installation
- Also suitable for block flanges
- Compact design
- LED ring driven by the control system, controlled by an illuminated switch
- Control box can be easily mounted on your vacuum chamber

### Technical data overview:

- Flange material: stainless steel 304L
- Window material: borosilicate glass
- Connection type: ISO-F, ISO-K (block flange)
- Sealing type: FPM O-ring
- LED colour: RGB
- Mounting position: any

	Ø A	Ø B	C	Ø S	S - DIN 912
DN 100	165	102	22	145	8 x M8
DN 160	225	153	22	200	8 x M10

	Voltage [V]	Power [W]	Connector	Cable length [m]
DN 100 RGB	5	8,8	5,5 / 2,1	3
DN 160 RGB	5	12	5,5 / 2,1	3

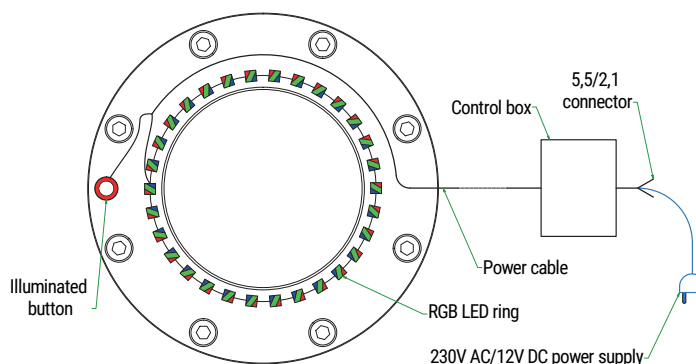
## Viewport sizes



DN 100



DN 160







## WHITE ILLUMINATED VIEWPORT

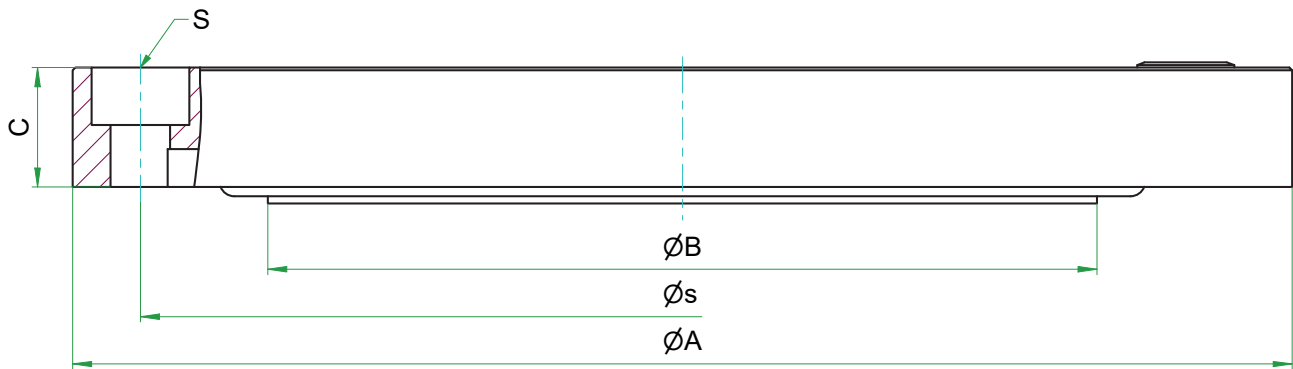
A lighting solution for your  
vacuum chamber



The white illuminated viewport brings light into your vacuum chamber.

## Simply plug it in to observe sample areas clearly

STREICHER offers a lighting solution designed for customers who require no viewing obstruction when looking inside a dim vacuum chamber. Our illuminated viewport makes the everyday life of the vacuum end-user easier.



## Slim design. Many benefits. For better work.

### Advantages of STREICHER's illuminated viewport:

- ISO F compatible
- White LED for easy installation
- Compact 230 V/12 V power supply included
- Also suitable for block flanges
- Inbuilt LED dimmer for brightness control, controlled by an illuminated switch

### Technical data overview:

- Flange material: stainless steel 304L
- Window material: borosilicate glass
- Connection type: ISO-F, ISO-K (block flange)
- Sealing type: FPM O-ring
- LED colour: white
- Mounting position: any

	Ø A	Ø B	C	Ø S	S - DIN 912
DN 100	165	102	22	145	8 x M8
DN 160	225	153	22	200	8 x M10

	Voltage [V]	Power [W]	Connector	Calbe length [m]
DN 100 White	12	2,4	5,5 / 2,1	3
DN 160 White	12	2,7	5,5 / 2,1	3

## Viewport sizes



DN 100



DN 160

